

[BACK TO MAIN TOC](#)

Appendix E: All Columns Test Result Curves

Following graphs provide the results obtained from DAQ in each column test session. Figures E1 to E6 show the load versus strain curves for all columns at all available sensor attached to the specimen.

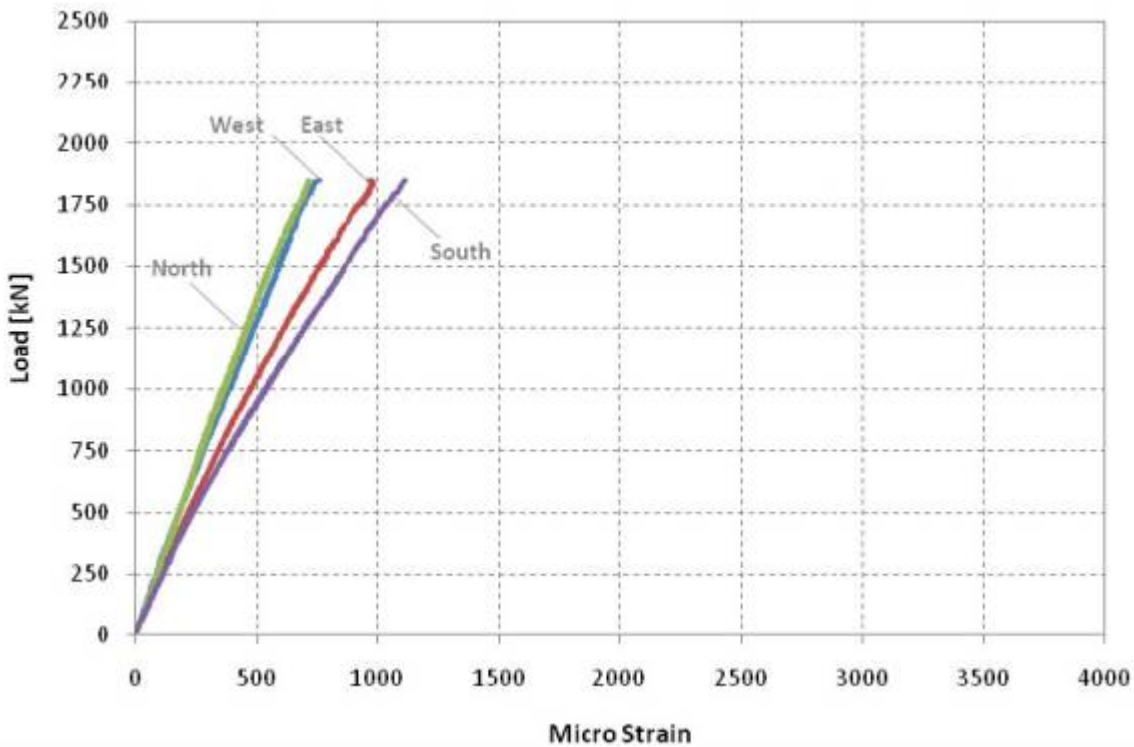


Figure E1: Column FF-NC-1, all pi-gauges.

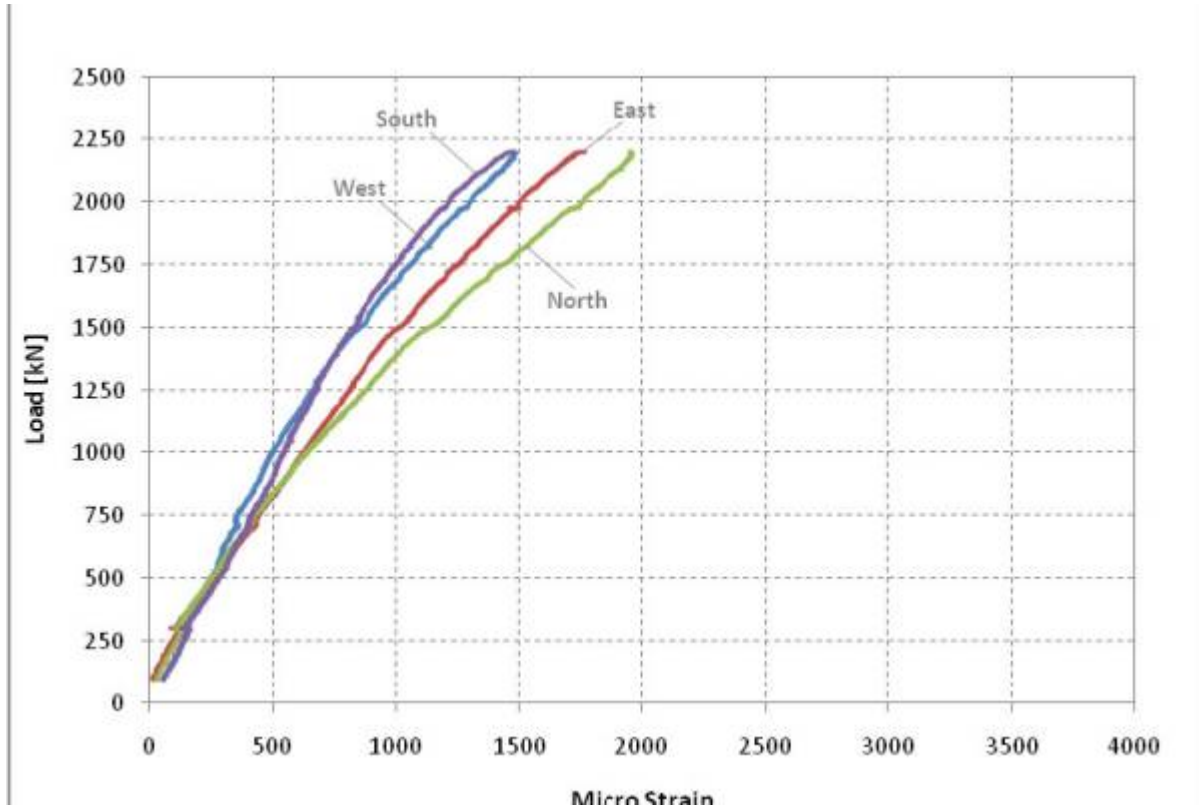


Figure E2: Column CT-NC-1, all pi-gauges.

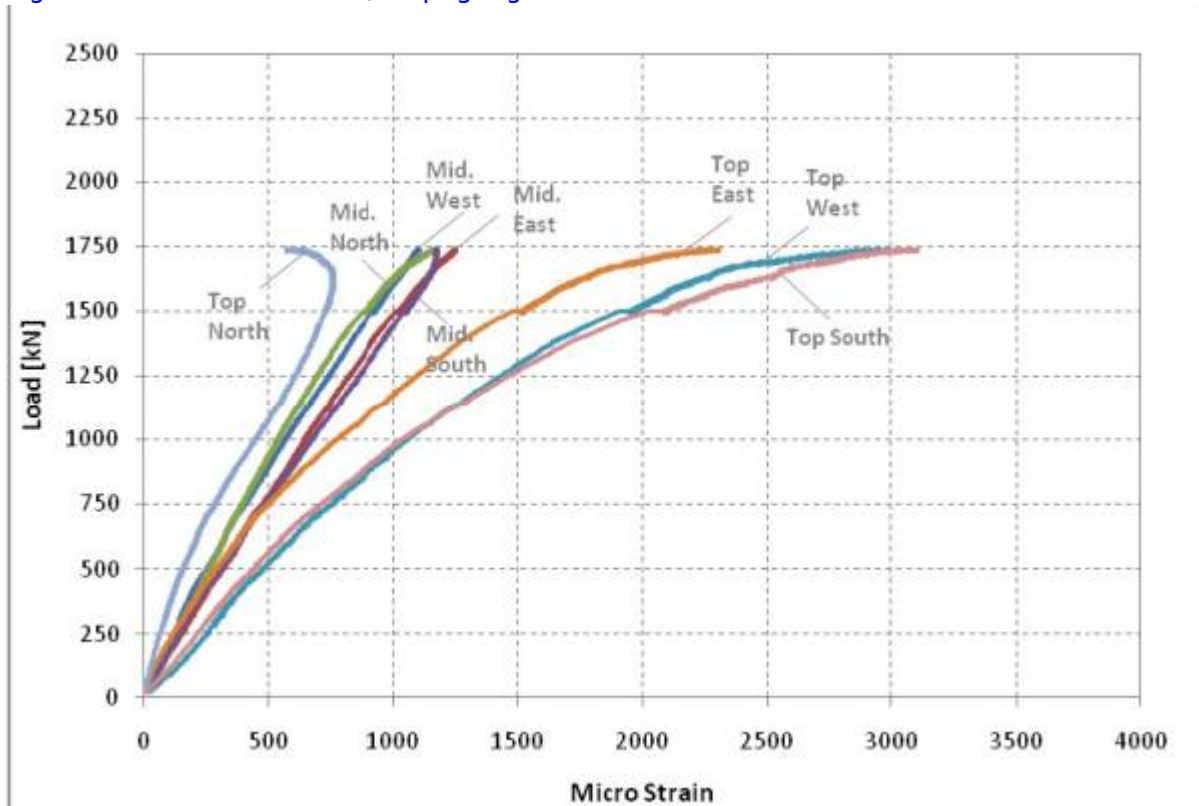


Figure E3: Column FF-FAC, all pi-gauges.

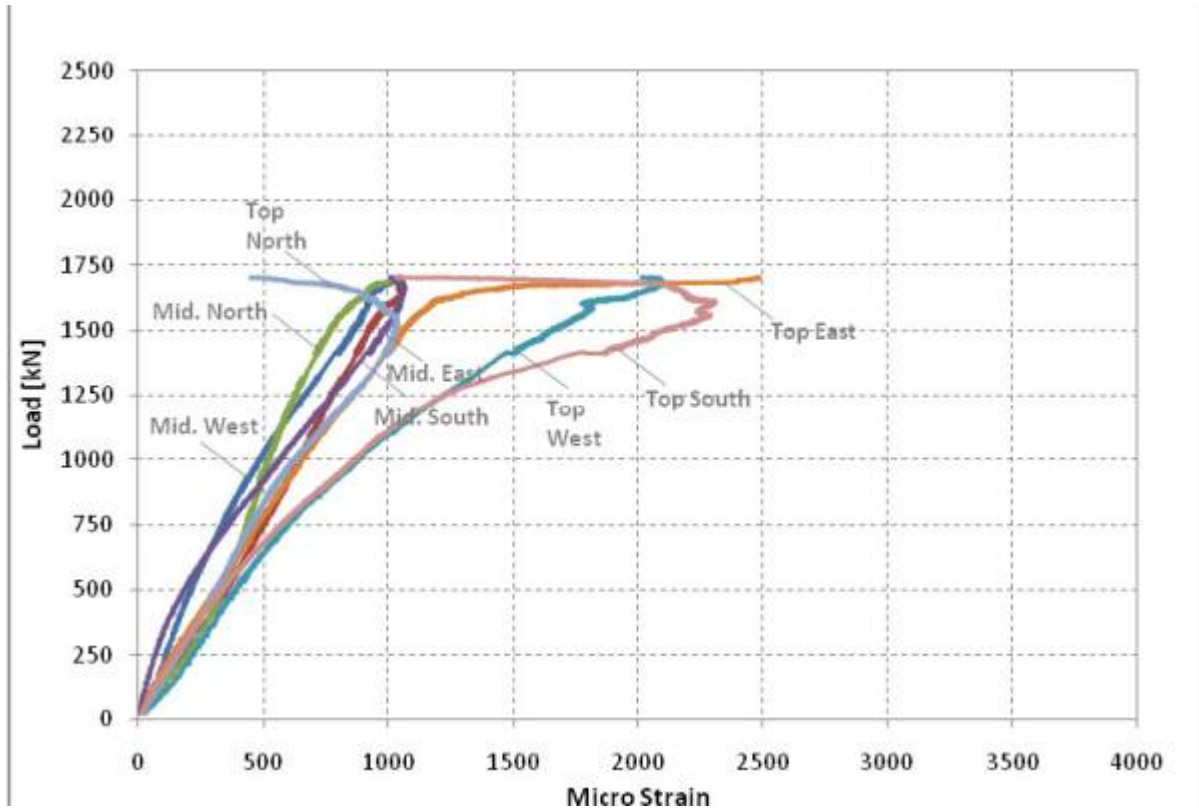


Figure E4: Column CT-FAC, all pi-gauges.

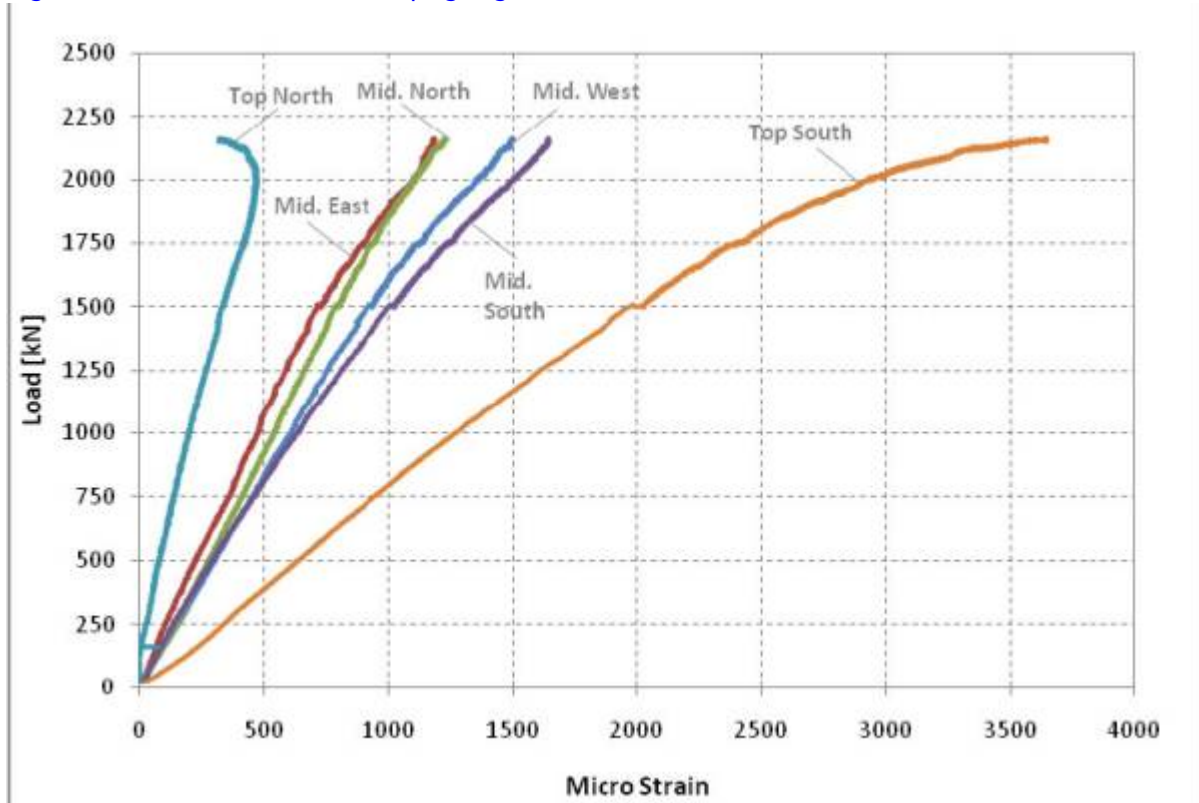


Figure E5: Column FF-NC-2, all pi-gauges.

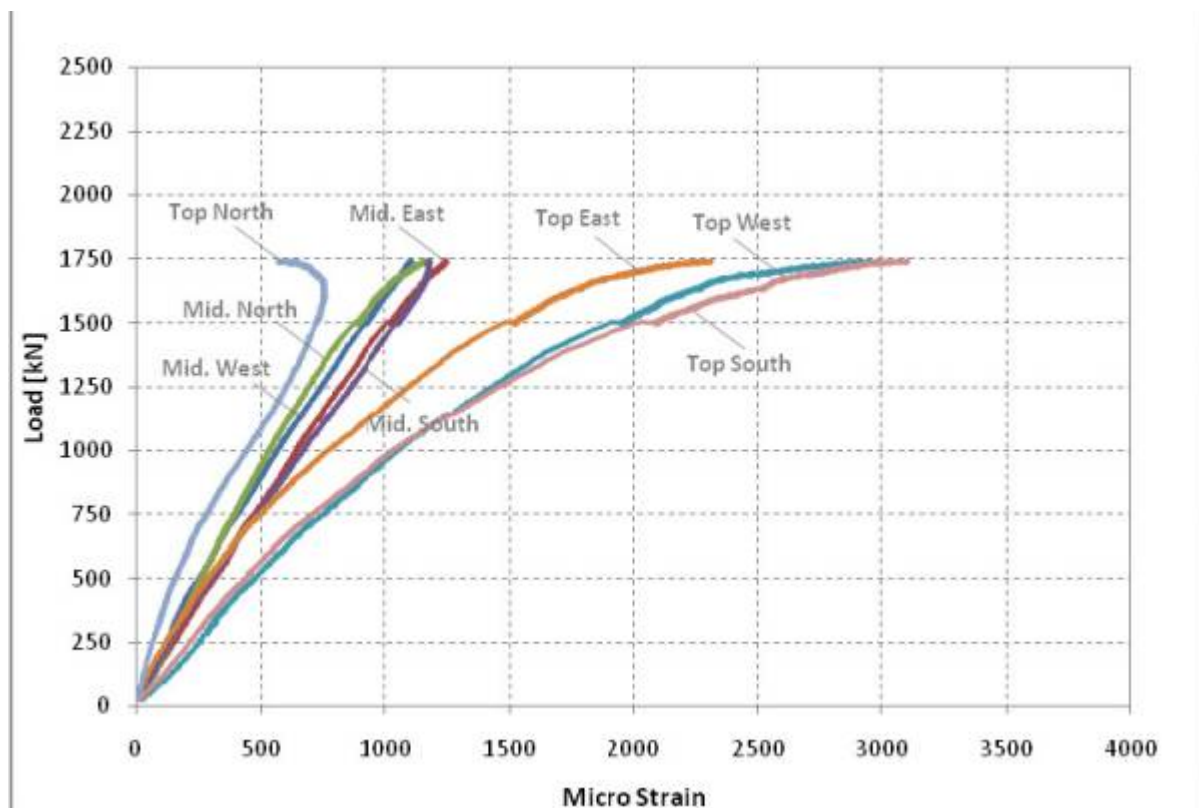


Figure E6: Column CT-NC-2, all pi-gauges.

See Also

Place text here.

From:
<http://fabwiki.fabric-formedconcrete.com/> - FabWiki

Permanent link:
http://fabwiki.fabric-formedconcrete.com/doku.php?id=fabwiki:research:canada:delijani:appendix_e

Last update: 2023/10/15 15:31

